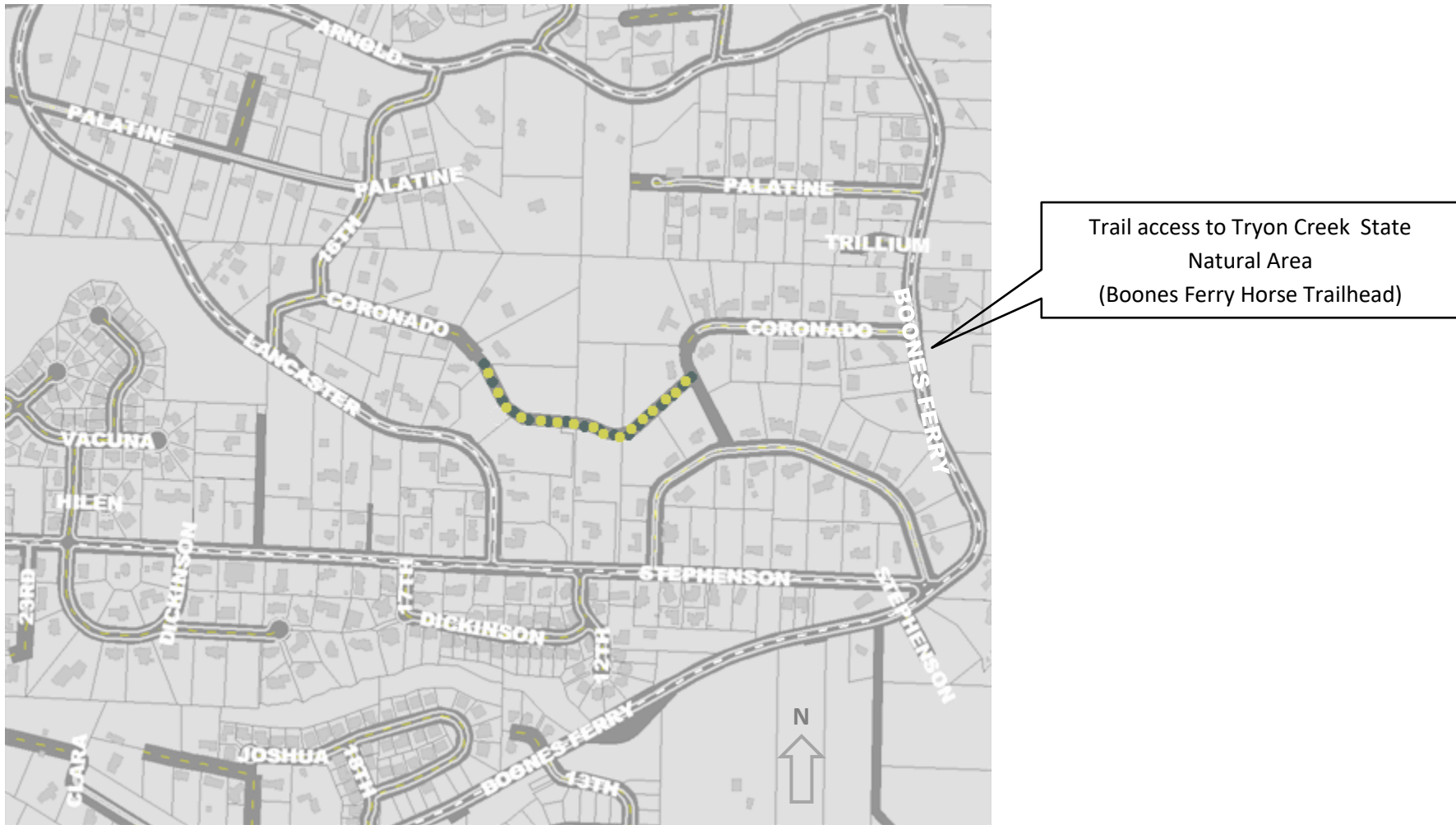


Path on SW Coronado right-of-way

Location and Description of Access

The general location of SW Coronado Street right-of-way can be seen on the map below.



The west entrance to the SW Coronado Street right-of-way is located near the intersection of SW 16th Drive and SW Coronado Street. Following SW Coronado Street east about an eighth of a mile the paved street meets two paved driveways. Do not take the one climbing to the right; follow the one straight ahead.



The path is found by walking down this driveway about fifty feet and then turning right onto the path that wraps around a post holding a house number (1449). The section of driveway leading up to the path, as well as the path itself are both on the SW Coronado Street public right-of-way.

The path is well trodden and easy to discern, with a couple of challenging spots on the first four hundred yards. It is completely in the right of way and does not encroach upon private property. Extensive communications with the City of Portland, Bureau of Transportation officials have firmly established that this right-of-way is open for public use. The street boundaries are shown on the map below:



Note 1: Fences are currently encroaching upon the right-of-way. The City of Portland is aware of the encroachment and has taken some steps to address it.

The east entrance to the path, on SW Coronado Ct., is also an unfinished street right-of-way. It runs north/south between SW Coronado Street and SW Stephenson Court. About one hundred feet from the northern (SW Coronado Street) end of SW Coronado Court is the opening to the SW Coronado Street right-of-way path. The entrance looks like this:



August, 2019