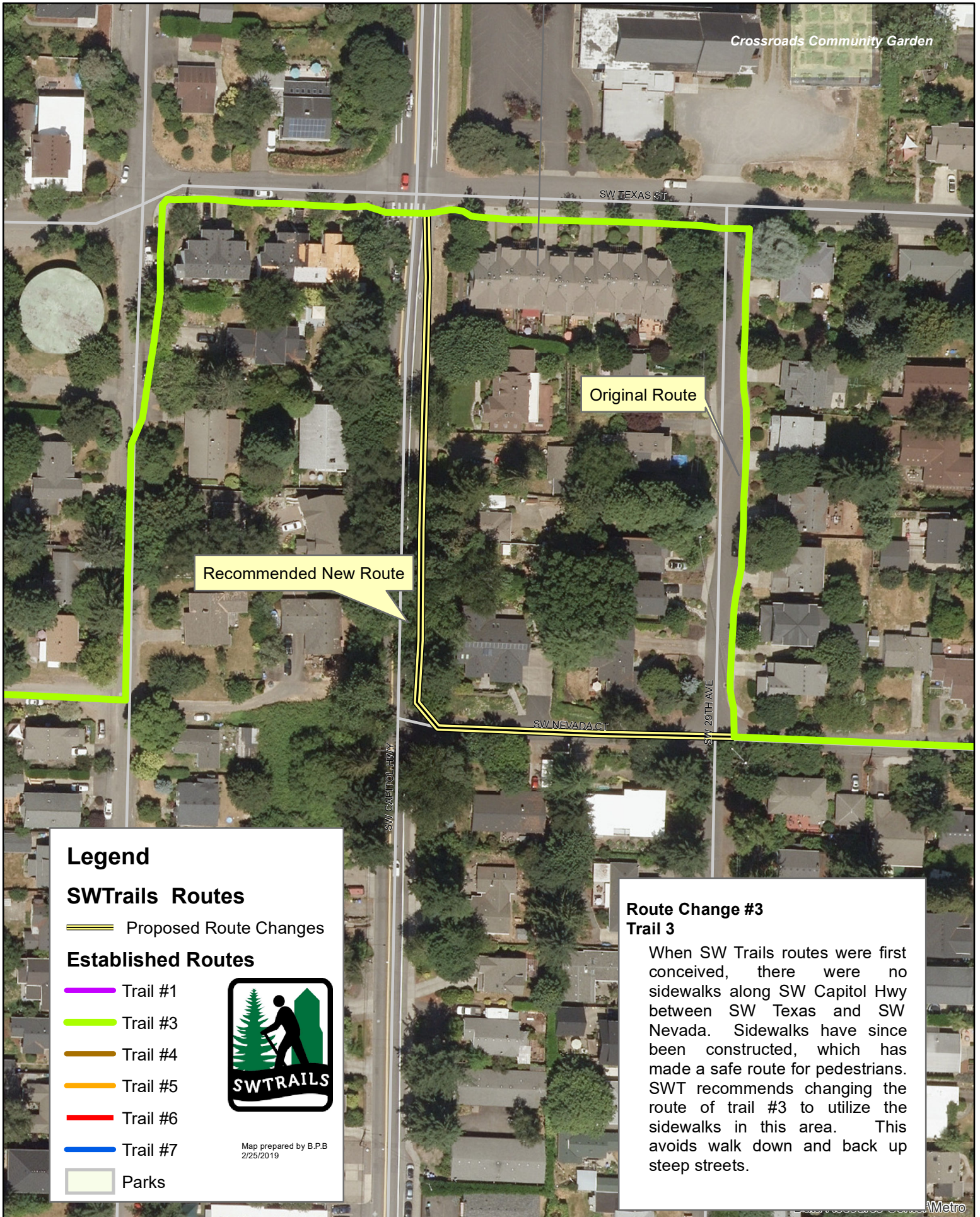


# SWTrails Route Change Recommendations



Crossroads Community Garden

SW TEXAS ST

Original Route

Recommended New Route

SW NEVADA CT

SW CAPITOL HWY

SW 28TH AVE

## Legend

### SWTrails Routes

Proposed Route Changes

### Established Routes

- Trail #1
- Trail #3
- Trail #4
- Trail #5
- Trail #6
- Trail #7



Map prepared by B.P.B  
2/25/2019

Parks

### Route Change #3 Trail 3

When SW Trails routes were first conceived, there were no sidewalks along SW Capitol Hwy between SW Texas and SW Nevada. Sidewalks have since been constructed, which has made a safe route for pedestrians. SWT recommends changing the route of trail #3 to utilize the sidewalks in this area. This avoids walk down and back up steep streets.