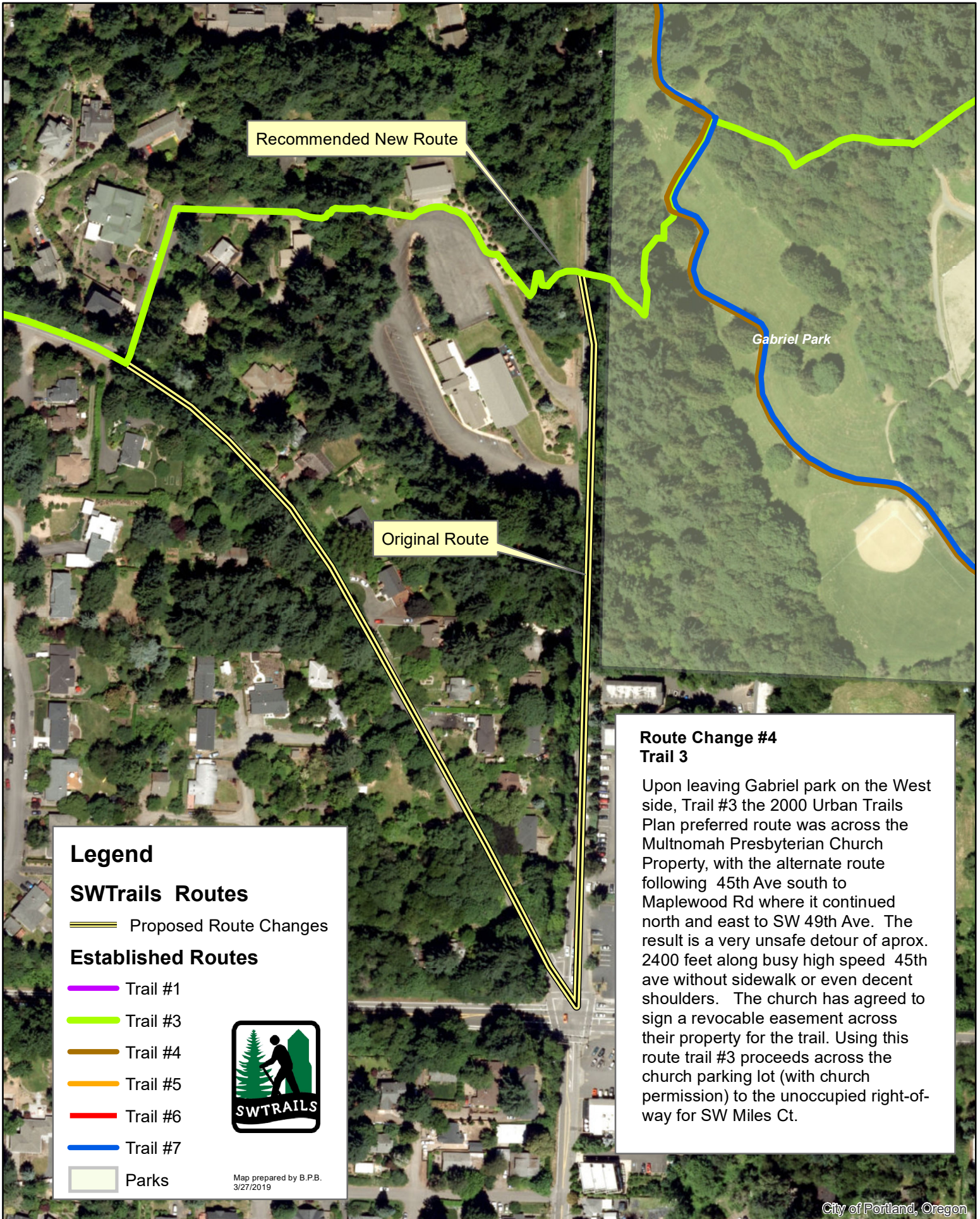


SWTrails Route Change Recommendations



Recommended New Route

Original Route

Gabriel Park

Route Change #4 Trail 3

Upon leaving Gabriel park on the West side, Trail #3 the 2000 Urban Trails Plan preferred route was across the Multnomah Presbyterian Church Property, with the alternate route following 45th Ave south to Maplewood Rd where it continued north and east to SW 49th Ave. The result is a very unsafe detour of aprox. 2400 feet along busy high speed 45th ave without sidewalk or even decent shoulders. The church has agreed to sign a revocable easement across their property for the trail. Using this route trail #3 proceeds across the church parking lot (with church permission) to the unoccupied right-of-way for SW Miles Ct.

Legend

SWTrails Routes

Proposed Route Changes

Established Routes

- Trail #1
- Trail #3
- Trail #4
- Trail #5
- Trail #6
- Trail #7



Parks

Map prepared by B.P.B.
3/27/2019