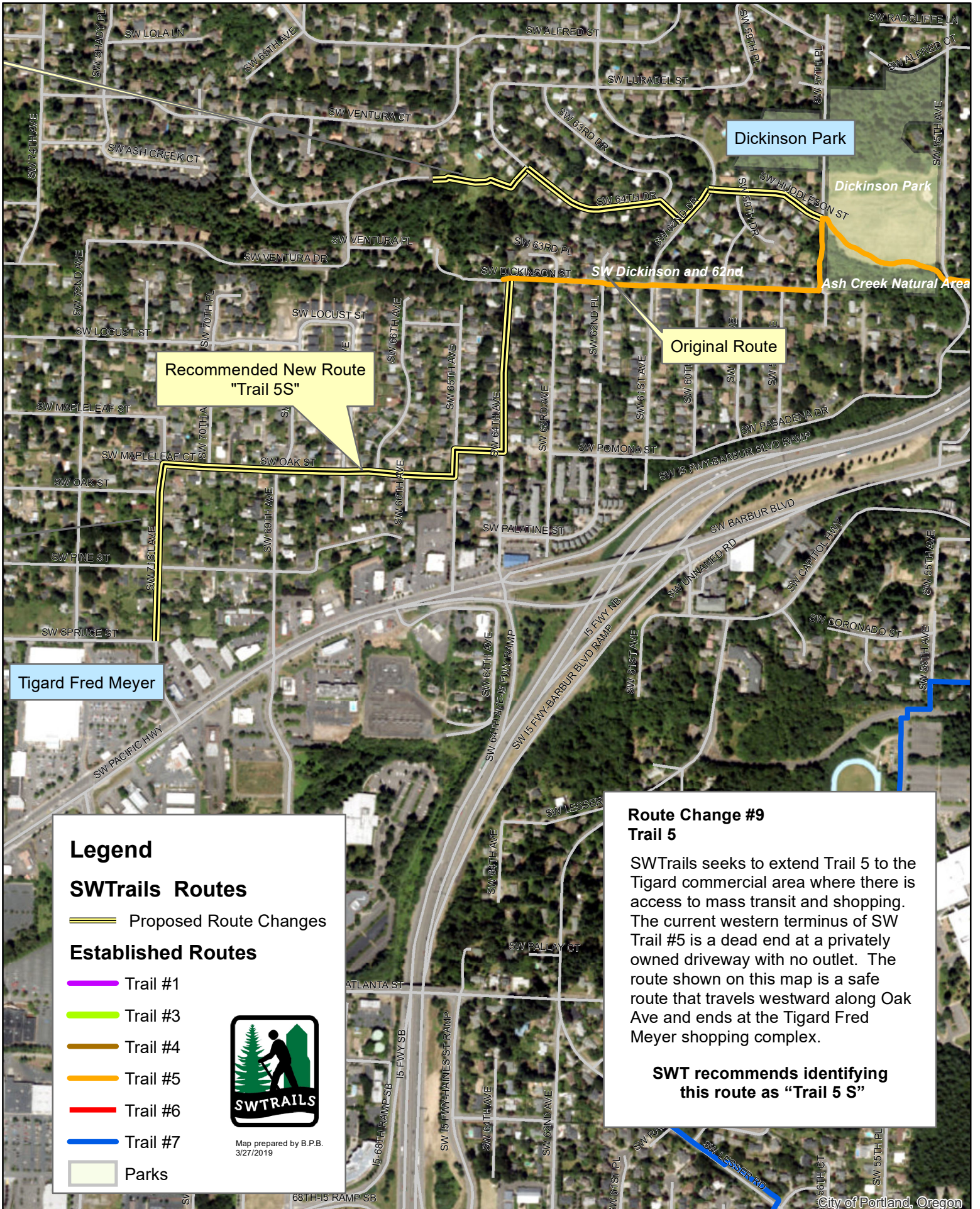


# SWTrails Route Change Recommendations



Dickinson Park

Dickinson Park

Ash Creek Natural Area

SW Dickinson and 62nd

Original Route

Recommended New Route  
"Trail 5S"

Tigard Fred Meyer

## Legend

### SWTrails Routes

Proposed Route Changes

### Established Routes

Trail #1

Trail #3

Trail #4

Trail #5

Trail #6

Trail #7

Parks



Map prepared by B.P.B.  
3/27/2019

## Route Change #9 Trail 5

SWTrails seeks to extend Trail 5 to the Tigard commercial area where there is access to mass transit and shopping. The current western terminus of SW Trail #5 is a dead end at a privately owned driveway with no outlet. The route shown on this map is a safe route that travels westward along Oak Ave and ends at the Tigard Fred Meyer shopping complex.

**SWT recommends identifying this route as "Trail 5 S"**