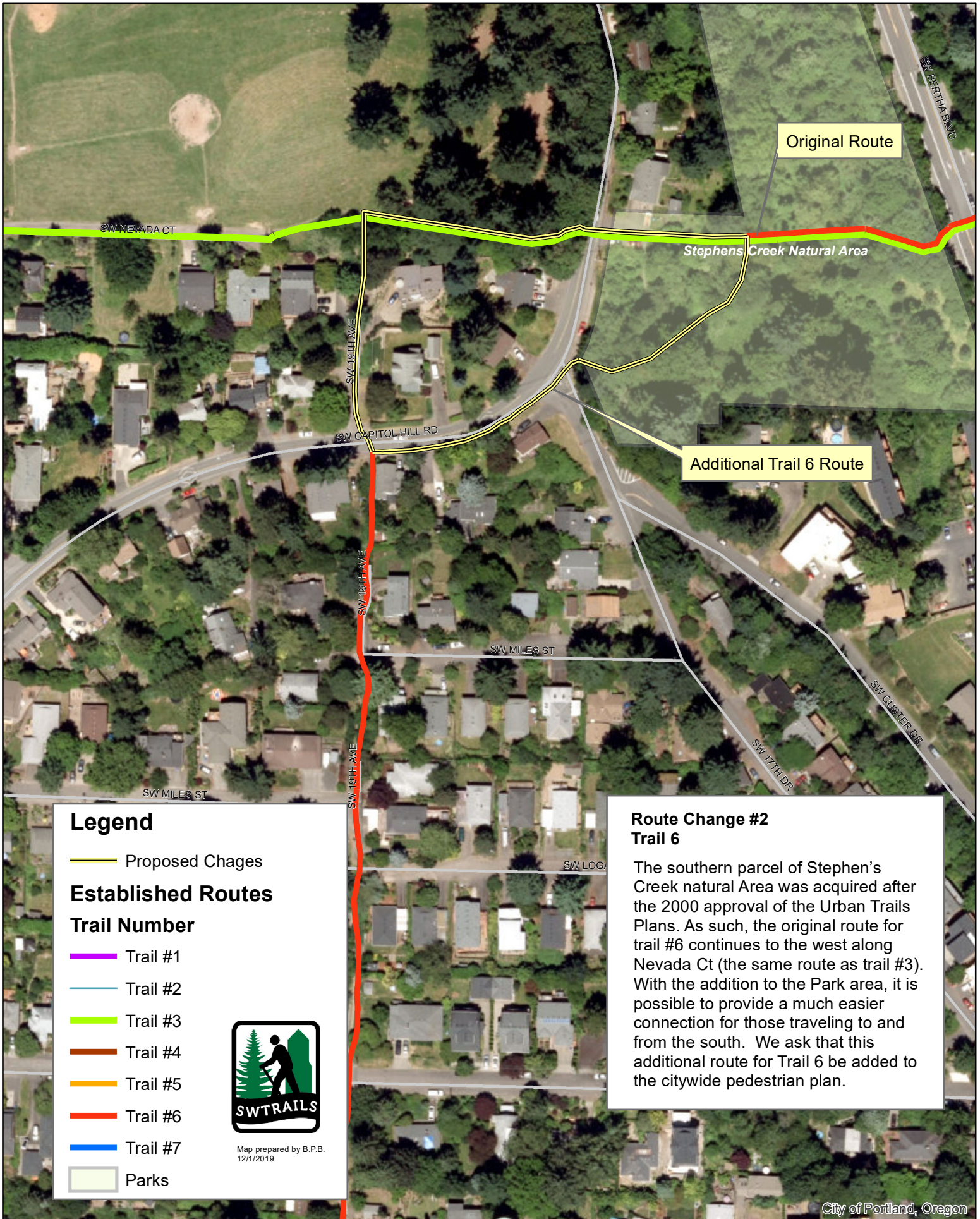


SWTrails Route Change Recommendations



Original Route

Stephens Creek Natural Area

Additional Trail 6 Route

Legend

Proposed Changes

Established Routes

Trail Number

Trail #1

Trail #2

Trail #3

Trail #4

Trail #5

Trail #6

Trail #7

Parks



Map prepared by B.P.B.
12/1/2019

Route Change #2 Trail 6

The southern parcel of Stephen's Creek natural Area was acquired after the 2000 approval of the Urban Trails Plans. As such, the original route for trail #6 continues to the west along Nevada Ct (the same route as trail #3). With the addition to the Park area, it is possible to provide a much easier connection for those traveling to and from the south. We ask that this additional route for Trail 6 be added to the citywide pedestrian plan.